

# Velox™ 3.2 Highlights

## Probe Station Control Software

### Taking Vision Capabilities to the Next Level

Velox 3.2 takes vision capabilities, usability and user guidance to the next level. In line with our Velox user-orientated principles, the new Spectrum Vision has been modernized to become more intuitive. All tools and icons of Spectrum Vision are now arranged in a more user-focused manner and right there when needed. A novel, self-adapting workflow guidance has been implemented and intuitively leads the user through different setups, alignment routines and the exclusive Autonomous Measurement Assistants.

For better progress visualization, a new modern progress bar has been implemented. The Velox module SiPh-Tools has been updated for optimized automation.

A free upgrade is available for existing customers.\*

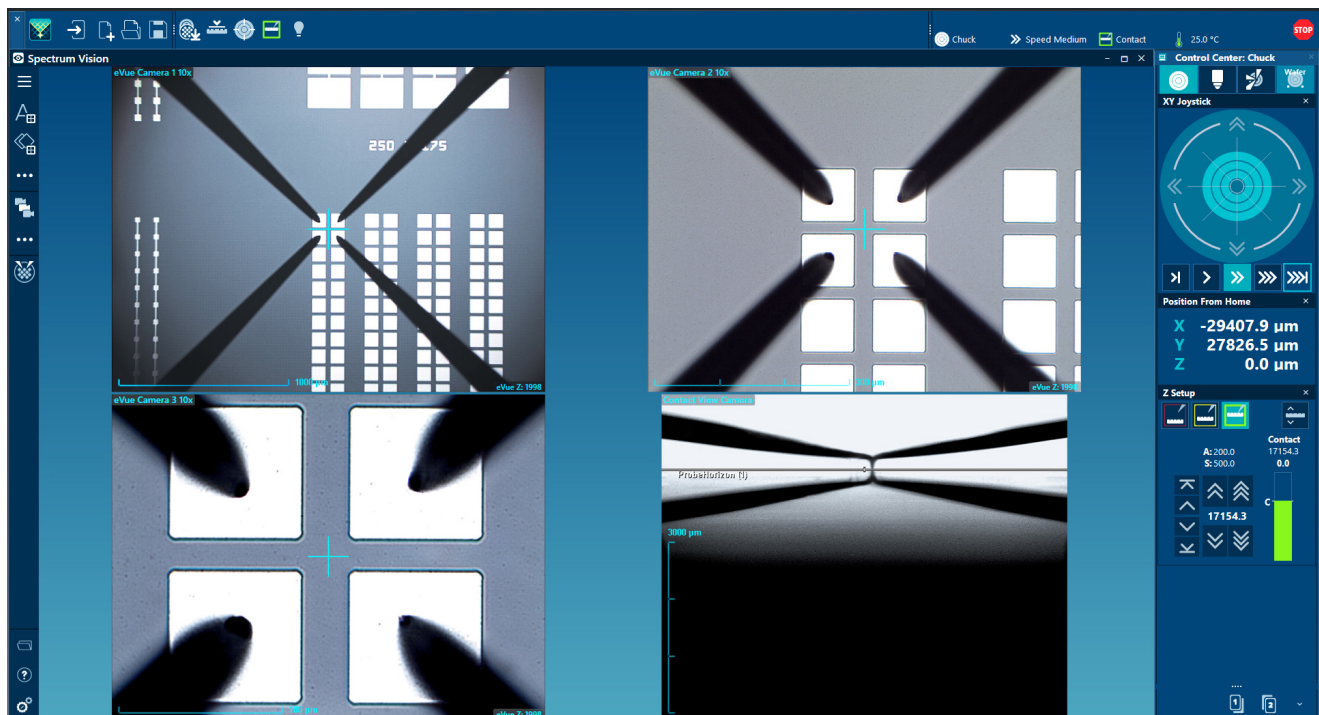


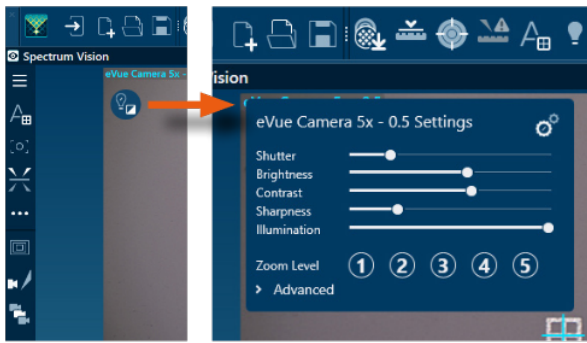
### Modernized Spectrum Vision

- / Modernized, intuitive user interface
- / Customizable toolbar
- / Guided workflows for wafer setups, alignment tools and Autonomous Assistants
- / Basic camera settings always at hand with floating action buttons

#### Benefit:

Intuitive, ergonomic operation with significantly less training needs.



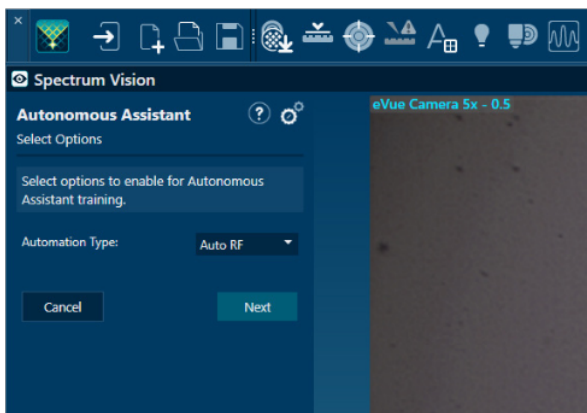


## Floating Action Buttons

- / Go to **Light and Image Settings** of the selected camera view with only one mouse click

**Benefit:**

Easier and faster setup of camera views.

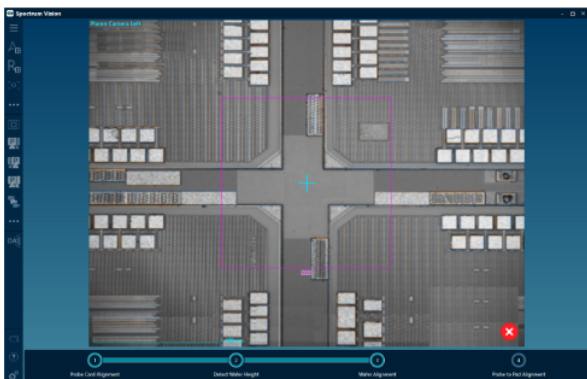


## Workflow Wizard

- / Guided workflows for wafer setups, alignment tools and Autonomous Assistants
- / Workflow wizard shows task-relevant settings and options only
- / Wizard settings can be corrected anytime – no need to restart the wizard
- / Wizard helps with intelligent solutions in case of error

**Benefit:**

Less training needed. Faster setup times.

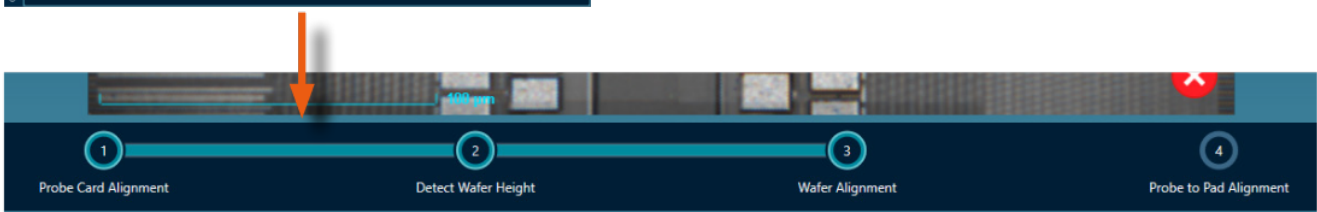


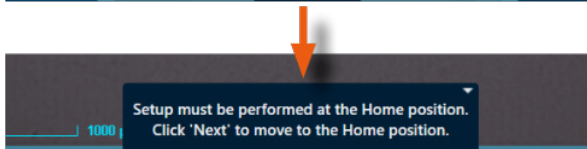
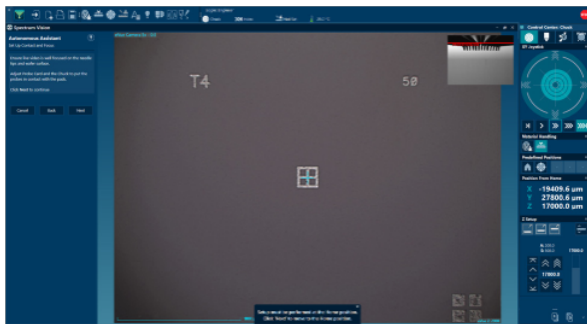
## Progress Bar

- / Visualizes the progress of setup, alignment and measurement tasks

**Benefit:**

Status information always at hand.



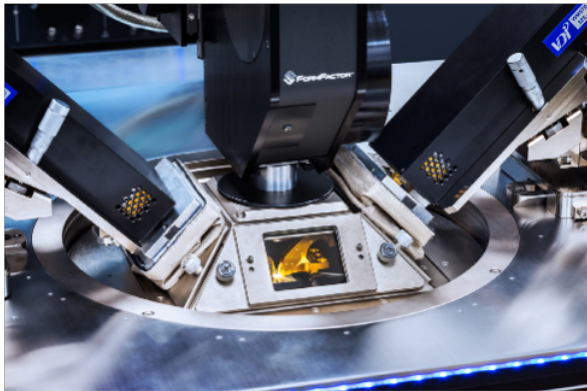


## Toast Notifications

- / Informs the user about events, for example "Successful Alignment"
- / Interacts with the user and helps with intelligent solutions

**Benefit:**

Less training needed. Faster setup times.

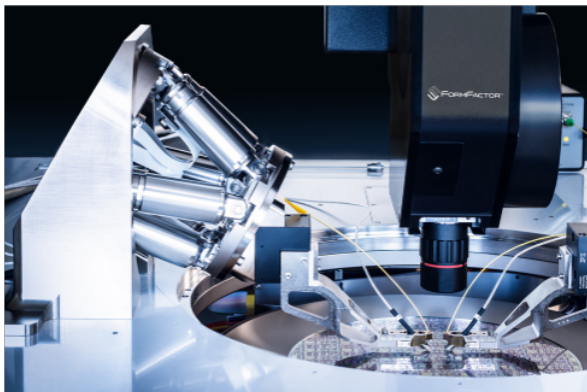


## Autonomous RF

- / Improved automation routines

**Benefit:**

Faster time to data with increased accuracy.



## SiPh-Tools Update

- / Optimized interface between SiPh-Tools and Velox
- / Provides more automation and enhanced re-alignment for unattended test over multiple temperatures
- / Reduces manual interventions

**Benefit:**

Faster time to data with increased accuracy.

\* Requires Service visit and upgrade to Windows 10. Please contact your local sales person for more information.