

Cascade
Summit™
 200 mm Manual Probe System

eVue™ digital imaging system

- Easy probe set-up and navigation
- Simultaneous display of up to three cameras and optical magnifications
- Widest field of view for easy navigation
- Highest optical magnification for precise probe alignment
- Live motion frame rate to avoid damage to probes or wafer
- Internal focus allows fast Z-profiles to maintain contact over temperature

Versatile microscope mounts

- High-stability or large-area
- Tilt back allows easy access to probes
- Manual, motorized or programmable

Connection panels

- Coax, triaxial, and pin jack feed-throughs available
- Limit cable strain and motion for measurement stability
- Instrument stays connected at back of panel
- Probe connection made at front of panel
- Simple to rearrange cabling when needed

Platen lift

- Easy contact and separate function for probe cards and positioners
- Available micrometer adjustment to set probe card contact

PureLine™ technology

- Enhanced EMI shielding
- Lowest spectral noise floor and system AC noise
- Ideal for low level and IV measurements

AttoGuard™

- Extends instrument guard to completely surround wafer
- Makes the station invisible to the instrument
- Extremely low capacitance and leakage characteristics
- Fast settling times

Rollout stage

- Full wafer access for safe and easy loading
- Maintains chuck integrity without contaminating layers
- Easy access to calibration substrates on auxiliary chucks

MicroChamber™

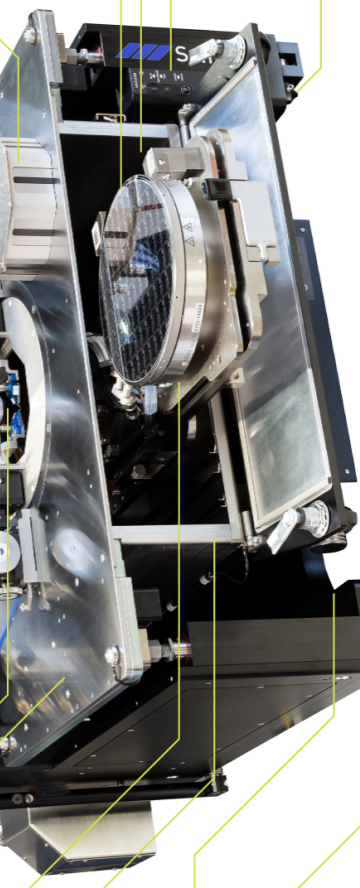
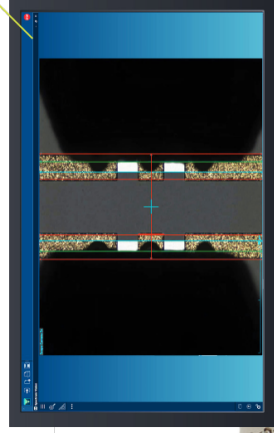
- EMI shielding for low noise measurements
- Environmentally sealed for moisture-free, low-temperature measurements
- Low volume for the fastest purge
- Light tight to eliminate the need for a dark box

MicroChamber access door

- Full width for easy access to wafers and cal substrates

Compact footprint

- Suitable for bench top use to preserve lab space
- Optional vibration isolation table



- **Velox™ probe station control software**
- Intuitive GUI for efficient system utilization by novice and expert users
- Optimized version for manual probe systems
- Easy integration with instrument, testers, and test and measurement software for fast data collection

Ergonomic accessory mount

- Keyboard and microscope controls easily accessed
- Maintains an orderly workspace on platen and benchtop

TopHat™

- Maintains MicroChamber integrity
- Allows full access to positioners and microscope at any temperature
- Allows adjustments without exposing chamber to external environment
- Maintains chuck temperature, thermal equilibrium, and mechanical stability during probe adjustments

Modular chucks

- FentoGuard® triaxial and coax versions available
- High-performance thermal and economical non-thermal options
- Wide range of temperature options from -60 °C to 300 °C and higher
- 200mm and 150mm versions

Auxiliary chucks

- Two integrated mounts for calibration substrates
- Thermally isolated to prevent load drift over temperature
- Contact height can be set independently from wafer
- Microwave absorber options available

Chuck vacuum control

- Independent zones for various wafer sizes, die and shards
- Separate controls for auxiliary chucks

Manual stage control

- Intuitive manual controls

©Copyright 2018, FormFactor, Inc. All rights reserved. FormFactor and the FormFactor logo are trademarks of FormFactor, Inc. All other trademarks are the property of their respective owners. All information is subject to change without notice.