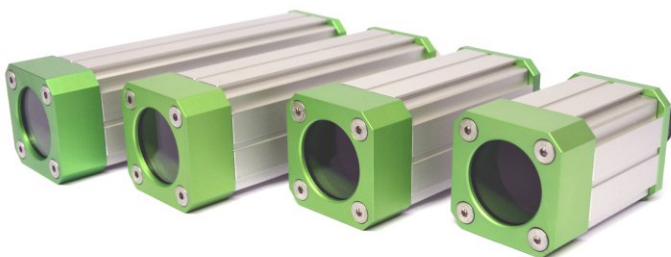


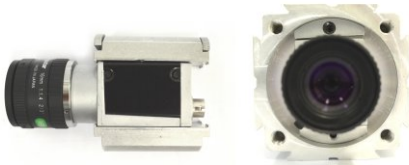


Benefits:

- For cameras up to 40 x 40mm cross section
- Robust construction
- Compact size
- High IP protection class
- Flexible camera positioning
- High chemical resistance
- Vibration-proof mounting
- Camera mount included
- Excellent heat dissipation
- Special version for Tamron MP3010



Technical Details:

Max. Camera Size (w x h)	40 x 40mm 29 x 47mm	Weight (without camera mount)	Approx. 660g (Size XS) Approx. 850g (Size S) Approx. 1070g (Size M) Approx. 1200g (Size L)
Max. Lens Diameter	55mm (in profile) 52mm (in front lid)	Enclosure Material	Anodized Aluminum
Inner Length	94 (Size XS) 136 (Size S) 189 (Size M) 219 (Size L)	Enclosure Seals	NBR
Enclosure Dimensions (w x h x l, without cable gland)	66 x 66 x 108mm (Size XS) 66 x 66 x 150mm (Size S) 66 x 66 x 203mm (Size M) 66 x 66 x 233mm (Size L)	Cable Gland Aperture (max. connector size)	22mm (Rear Wall A) 13.5mm (Rear Wall B) 16.5mm (Rear Wall B) 26.5mm (Rear Wall C)
Window Aperture	45mm	Cable Diameter	4-6.5mm (Rear Wall B) Self drilling (Rear Wall C)
Standard Window IR Mirror Saphire Germanium Acrylic, uncoated Acrylic, double sided ARC	BK7, double sided ARC Order No.: 20.000.010* Order No.: 20.000.016* Order No.: 20.000.017* Order No.: 20.000.058* Order No.: 20.000.029*	Cable Gland Seal	TPE
Window Seal	EPDM		
Protection Class	IP66 (Nema 4) IP67 (Nema 6)	The mount guarantees excellent heat dissipation	

*Please ask for the product number of the spare part



Front Lid Profile XS Profile S Profile M Profile L RearWall A RearWall B RearWall C RearWall D

Order Numbers:

			Salamander S für Tamron MP3010		100.010.602
Product ID	Camera Height	Camera Length	Enclosure Type	Rear Wall Type	Length
2	29: 0 30: 1 31: 2 32: 3 33: 4 34: 5 35: 6 36: 7 38: 8 40: 9	< 50mm: 3 < 74mm: 5 < 92mm: 7	1	A: 0 B: 1 C: 2 D: 3	XS: 070 S: 139 M: 192 L: 222

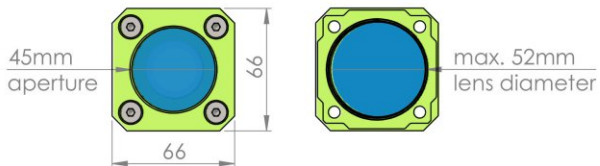
Example: 20.312.192 | Salamander M | camera height 29mm | camera length <50mm | rear wall C

Accessories:

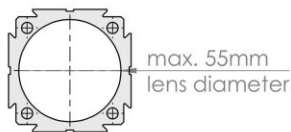
Product	Image	Order No.	Product	Image	Order No.	Product	Image	Order No.
Air Nozzle		50.100.025	Cooling Module		60.100.010	Mounting Kit 2		5.020.000
2" Wind Curtain		50.100.010	El. Heating Plate		70.100.018	Mounting Kit 6		5.060.000
Tube for W. Curtain		50.100.017	Orca Adapter		15.030.001	Mounting Kit 7		5.070.000
Pneumatic Shutter		50.200.010	Sun Roof Size S, M, L		20.010.001 20.010.002 20.010.003	Mounting Kit 9		5.090.000
Deflection Mirror 90°		20.020.004	LaserMount 19 or 20mm		14.100.019 14.100.020	Mounting Kit 10		5.100.000
30/60mm Extension		15.015.030 15.015.060	Corrugated Tube 28mm		20.000.006	Mounting Kit 15		5.150.000
60mm Side Exit		15.015.061	Mounting Kit 1		5.010.000	Mounting Kit 16m		5.160.000m
Position Ring		20.020.003				Mounting Kit 17m		5.170.000m



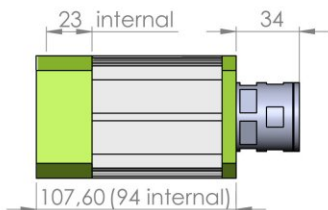
Front Lid



Profile



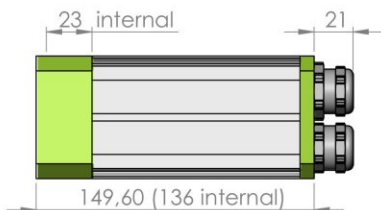
Size XS



Rear Wall A



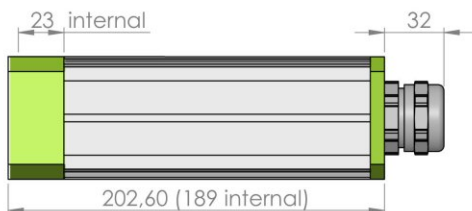
Size S



Rear Wall B



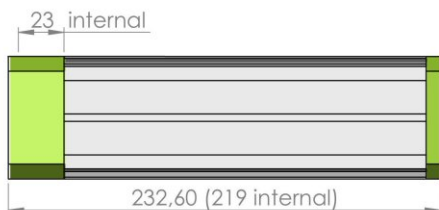
Size M



Rear Wall C



Size L



Rear Wall D

