

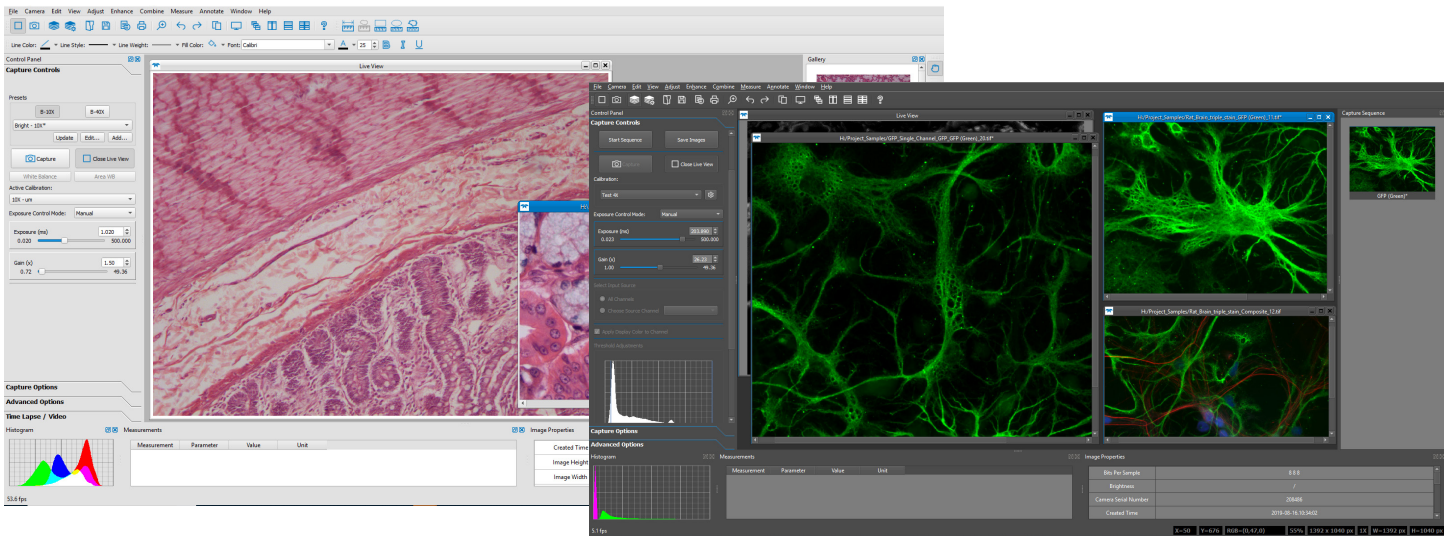
Microscopy Software

INFINITY ANALYZE 7

Control, Capture, and Process Images – With Ease

Teledyne Lumenera INFINITY microscope cameras include INFINITY ANALYZE 7, an intuitive software package for camera control, and image capture and processing for life science, clinical, and industrial research applications. Produce high quality images with ANALYZE 7 in brightfield or fluorescence modes with excellent reproducibility and accuracy.

Install and be ready to image in minutes with the easy-to-use INFINITY ANALYZE 7 application. Enjoy hassle-free use with no software license or update fees for as long as you own the camera, and reduce training time with easy-to-follow online video tutorials.



CUSTOMIZED IMAGE PROCESSING AND ARCHIVING

- ✓ Quickly process, archive and save images in one of several formats
- ✓ 16-bit format TIF or OME TIF files
- ✓ 8-bit format TIF, OME TIF, PNG, BMP, or JPG
- ✓ Apply and reproduce customized measurements and annotations with ease
- ✓ Metadata stored with images
- ✓ Auto saving options
- ✓ Copy to Image Gallery

BASIC CONTROLS AND CAPTURE OPTIONS

- ✓ Live preview capture
- ✓ Manual/auto exposure
- ✓ White balance
- ✓ Gain, gamma
- ✓ File format options
- ✓ Brightness, contrast
- ✓ Hue, saturation
- ✓ Histogram
- ✓ Binning x2
- ✓ Light source selection
- ✓ Flat-field correction (FFC)
- ✓ Calibration
- ✓ Scale bar
- ✓ Measurement
- ✓ Annotation
- ✓ Image orientation
- ✓ Zoom preview
- ✓ Sharpen
- ✓ Image stitching
- ✓ Focus stacking
- ✓ Channel split/merge
- ✓ Image math operations
- ✓ Look-up-table (LUT)

Single capture or time lapse, store to file with auto increment filename or manual file name, keyboard shortcut capture, video capture, produce video from time lapse.

VIDEO TUTORIALS

A series of video tutorials are located at: lumenera.com/support/microscopy/training-tutorials.html

OPERATING SYSTEMS

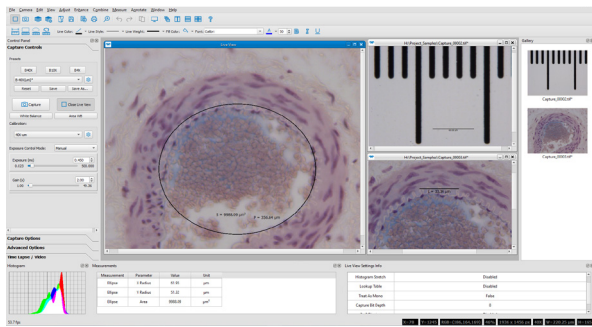
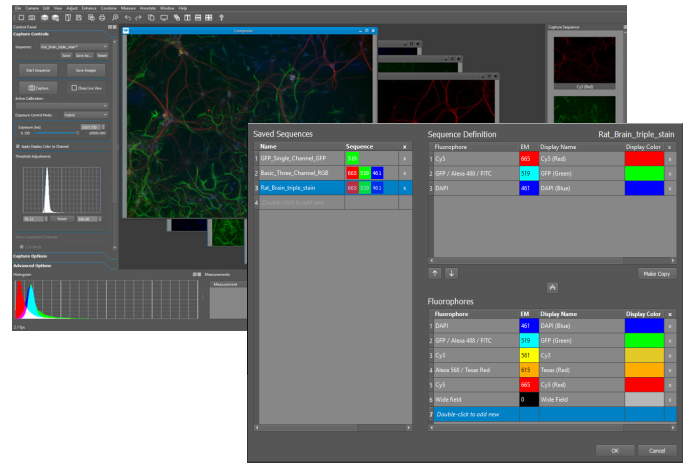
INFINITY ANALYZE is compatible with Windows 7, 8.1, 10 (32 and 64-bit), and MacOS 10.12 and above.



FLUORESCENCE MODE

Whether capturing a single channel or multi-channel image, custom defined Sequences retain the selected settings for repeatable results. INFINITY ANALYZE provides the image capture and color composition tools required for your experiments, offering both raw and processed output results.

- ✓ Identify filter cube/pseudo-color tints for your stains
- ✓ Configure single channel or multi-channel capture Sequences
- ✓ Manual adjust gain/exposure
- ✓ Hybrid Exposure simulates longer exposure time with faster frame rates
- ✓ Composite results, individual channels, and raw frames stored
- ✓ Channel X/Y shift option available
- ✓ Channel histogram stretch
- ✓ Storage formats include PNG, JPG, BMP, TIF, OME TIF* (*Fluorescence only)

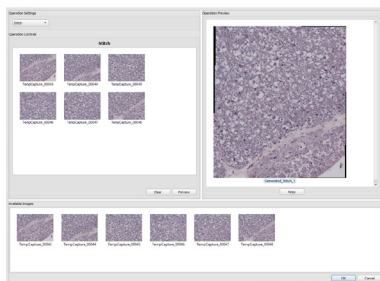
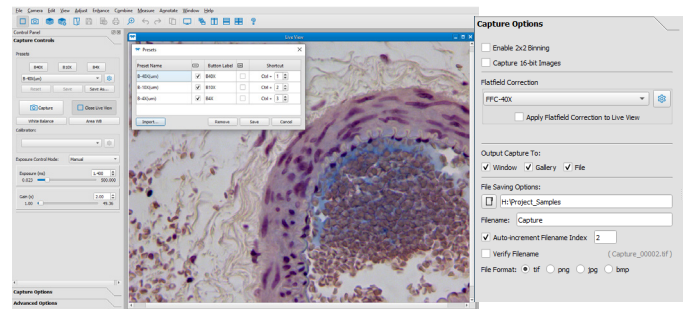


MEASUREMENT AND ANNOTATION

- ✓ Calibrate once for each objective
- ✓ Manage Calibrations and Presets
- ✓ Add macros to activate Presets
- ✓ Linear and area measurements
- ✓ Micrometer bar placement in Live Preview or Captured images
- ✓ Bitmap overlay for custom graphics
- ✓ Adjust colors, fonts, line weights
- ✓ Export data with copy to clipboard

ADAPTIVE CAMERA CONTROLS

- ✓ Manual and automatic camera controls optimize the live preview display
- ✓ Customize the screen layout to suit your workflow preference
- ✓ Store camera settings in user-defined Presets
- ✓ Associate calibrations and Flat Field Corrections with Presets
- ✓ Tailor image acquisition steps in custom Fluorescence Sequences
- ✓ Manage and organize image capture and storage to files, gallery, or window



STITCHING / FOCUS STACKING

- ✓ Stitch together adjacent images to form a large composite
- ✓ Collect images at different focal planes and produce a single in-focus image

ADDITIONAL FEATURES

- ✓ Full-time histogram display
- ✓ Produce video from time lapse frames
- ✓ Threshold-based cell counting
- ✓ Right-click context menus
- ✓ Post-processing math functions
- ✓ Export / import presets / calibrations / sequences
- ✓ Live preview, capture, timelapse, and video