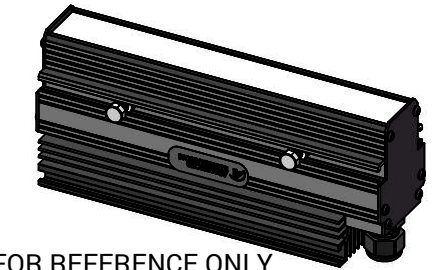
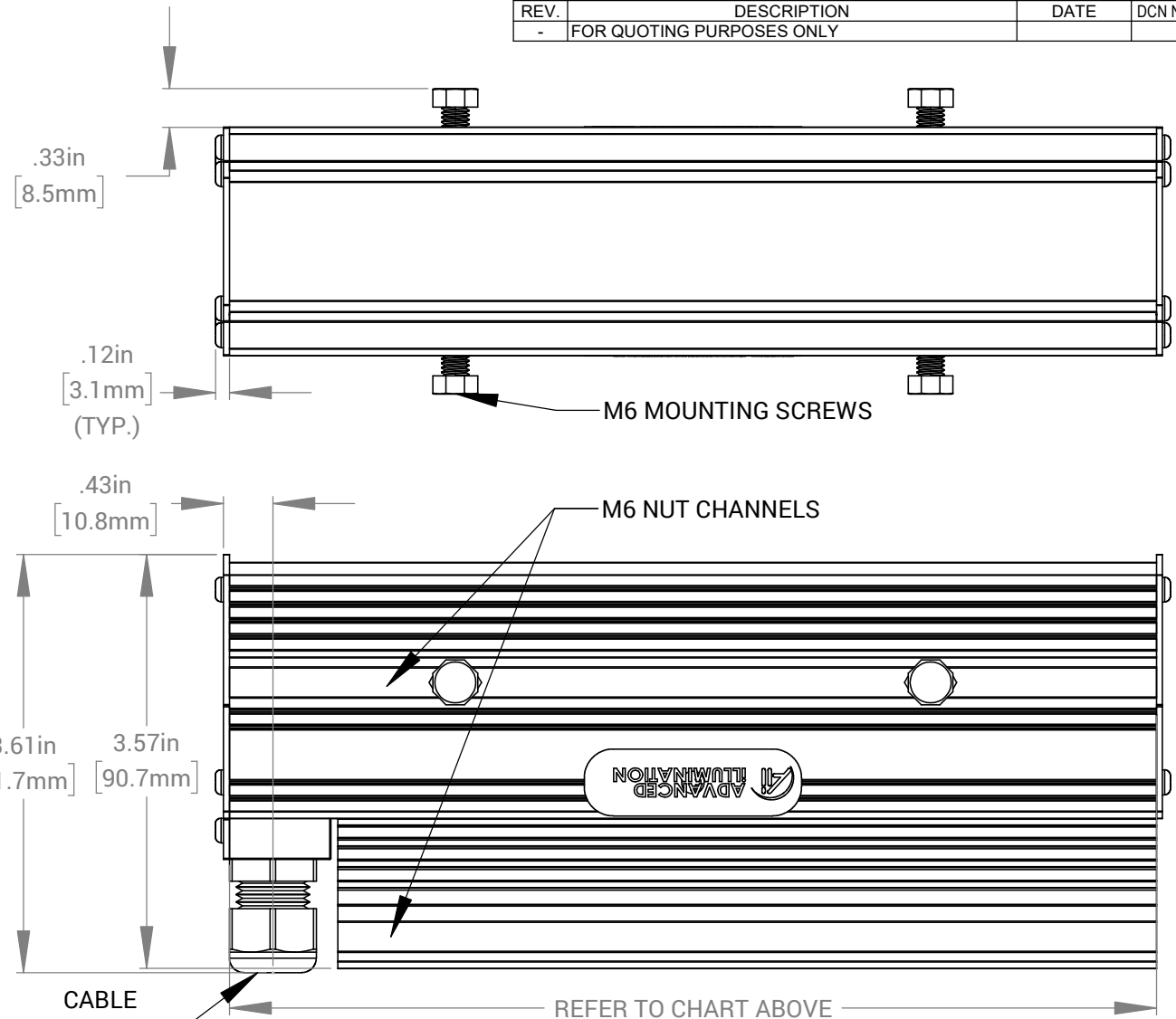


LL158 LENGTH MATRIX

PART #	LENGTH IN INCHES (mm)
LL15806	8.0 (203 mm)
LL15812	14.0 (356 mm)
LL15818	20.0 (508 mm)
LL15824	26.0 (660 mm)
LL15830	32.0 (812 mm)
LL15836	38.0 (965 mm)
LL15842	44.0 (1118 mm)
6" INCREMENTS UP TO A MAX OF 90"	

REVISIONS			
REV.	DESCRIPTION	DATE	DCN NO
-	FOR QUOTING PURPOSES ONLY		



FOR REFERENCE ONLY

PROPRIETARY AND CONFIDENTIAL
 THESE DRAWINGS AND SPECIFICATIONS ARE THE EXCLUSIVE PROPERTIES OF ADVANCED ILLUMINATION INCORPORATED ISSUED IN STRICT CONFIDENCE AND SHALL NOT, WITHOUT THE PRIOR WRITTEN PERMISSION OF ADVANCED ILLUMINATION INC BE REPRODUCED, COPIED OR USED FOR ANY PURPOSE WHATSOEVER EXCEPT FOR THE MANUFACTURE OF ARTICLES FOR ADVANCED ILLUMINATION INC

8" UNIT WEIGHT: 1.98 lbs

CUT USING:		UNLESS OTHERWISE SPECIFIED:	DATE	NAME	ADVANCED ILLUMINATION 440 STATE GARAGE ROAD, ROCHESTER, VERMONT 05767
		SURFACE SHOULD BE FREE OF SCRATCHES, BURRS, AND DENTS	25-FEB-21	Ai	
		DIMENSIONS ARE IN: INCHES	CHECKED	--	TITLE: DRAWING, INSTALLATION, LL158
		<u>TOLERANCES</u>	APPROVED	--	
		FRACTIONAL ± 1/16	MATERIAL		SIZE DWG. NO. REV A LL158 -
		ANGULAR: MACH ± 1 BEND ± 1	FINISH		
		TWO PLACE DECIMAL ± .010			SCALE: NTS/C CODE: - SHEET 1 OF 1
		THREE PLACE DECIMAL ± .005			
NEXT ASSY	USED ON	MAKE FROM			
APPLICATION					