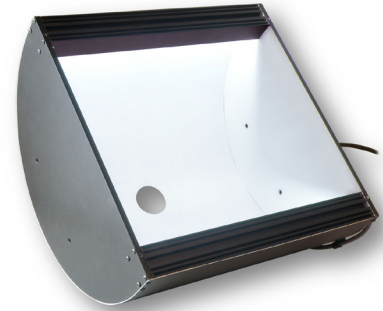





Product Highlights

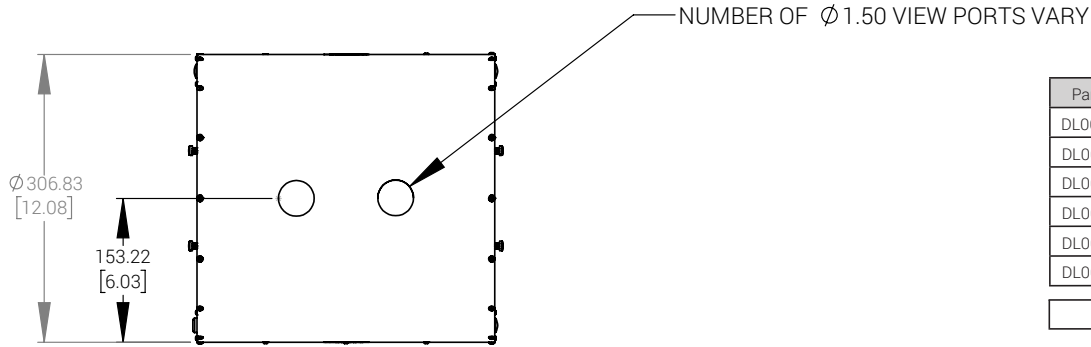
- 12" wide linear diffuse light for use with highly reflective materials
- Available in 6" increments; Lengths from 6" to 36"
- Can be built with up to 4 camera view holes



General Specifications

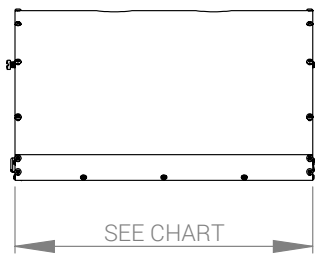
	Color	24v Current	All Other Controls
Electrical Specifications	455, 470, 505, 530, WHI	0.65 A Per 6"	0.50 A Per 6" Max
	590, 625, 660, 730,	0.65 A Per 6"	0.33 A Per 6" Max
	850, 940	0.65 A Per 6"	0.45 A Per 6" Max
Normal Operating Temperature	0 - 60°C		
Weight	DL06706	2.55lbs / 41oz / 1162g	
	DL06712	5.75lbs / 92oz / 2608g	
	DL06718	8.95lbs / 143 oz / 4054g	
	DL06724	12.15lbs / 194oz / 5500g	
	DL06730	15.35lbs / 246oz / 6974g	
	DL06736	18.55lbs / 297oz / 8420g	
Standard Cable Information	Up to 2 meters (80") long - 105°C rated PVC jacket, foil shield with drain.		
Photobiological Risk Factor IEC 62471	Exempt Applicable Wavelengths: 850, 940 Group 1 (Low-Risk) Applicable Wavelengths: 455, 470, 505, 530, 590, 625, 660, 730, WHI		
Compliance			
IP Rating	Not Rated		
Lumen Maintenance	L70 = 50,000 hours		

Mechanical Specifications



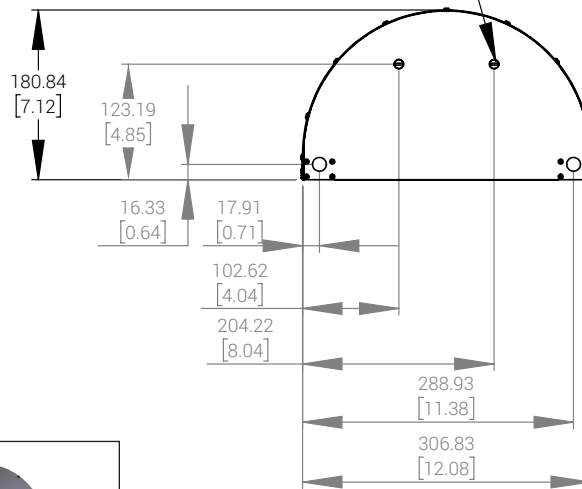
Part #	Length in mm (inches)
DL06706	165 (6.5)
DL06712	318 (12.5)
DL06718	470 (18.5)
DL06724	622 (24.5)
DL06730	775 (30.5)
DL06736	927 (36.5)

6" Increments up to a max of 36"

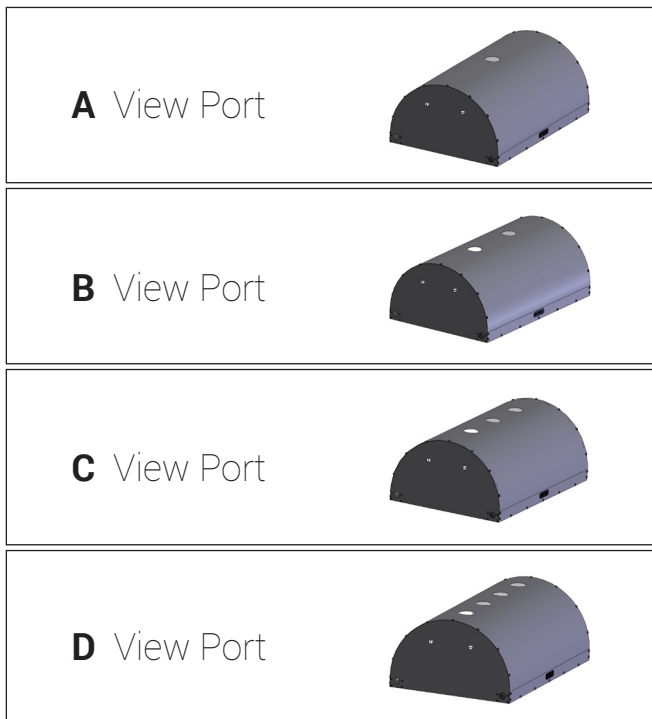


Dimensions are in mm [inches]

4X M6x8 SCREWS



Max # of view ports	
6"	2
12"	3
18"-36"	4



Part Number Key

Model	View Port	Illuminated Length	—	Spectral Wavelength	Connector/ Control	—	Alternative Connector
DL067	X	XX	—	XXX	XX	—	XXX
DL067	A (1 hole) B (2 holes) C (3 holes) D (4 holes)	XX 6" Increments		(royal blue) 455 (blue) 470 (cyan) 505 (green) 530 (amber) 590 (red orange) 625 (red) 660 (infra-red) 730 (infra-red) 850 (infra-red) 940 (white) WHI	C1 C5 IC ² I3 ² I3S ² 24		M12 ¹
Ex: DL067B06-625C1 DL067C12-WHII3					¹ Available with IC, I3, I3S and 24v ² Max length 12"		

Stock Product: *shipped within 3 days*
None

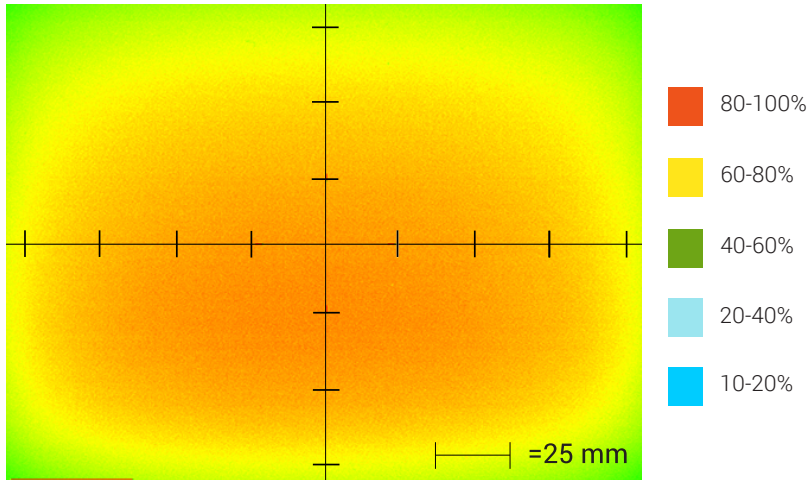
Build to Order: *12" A view; one hole shipped within two weeks;
six (6) weeks for all others*

Connector | Control Options

C1 Connector	C5 Connector	ICS 2 (IC)	ICS 3 (I3)	ICS 3S (I3S)	24
<i>For use with:</i> DCS Series Controllers	<i>For use with:</i> Pulsar 320 Strobe Controller.	Continuous in-line controller <i>Powered with:</i> 24V power supply	Combination strobe/continuous in-line controller <i>Powered with:</i> 24V power supply	Default-OFF strobe/continuous in-line controller <i>Powered with:</i> 24V power supply	Flying/tinned leads <i>Powered with:</i> 24V power supply

Optical Performance

Intensity Distribution

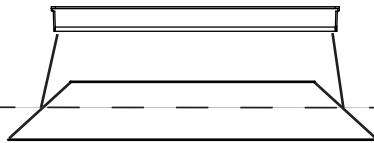


Optical measurement taken using DL067A12-WHIIC Rev. A @ 25mm

Area of Illuminance & Intensity

Working Area (FWHM)
@ Working Distance

241 x 305 (mm)
@25 (mm)



Light Output

Irradiance (W/M²): Min 24.0; Typ 28.2
Illuminance (kLux): Min 8.5; Typ 10.0

Operation and Wiring

ICS 2 (IC)

Pin (M12)	Function	Wire Color
1	+24 VDC	Brown
2	0-10 VDC Analog Control	White
3	DCGND	Blue
4	GLO	Black
5	N/A	Gray

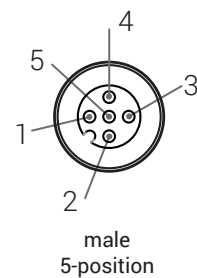
ICS 3 (I3 and I3S)

Pin (M12)	Function	Wire Color
1	+24 VDC	Brown
2	Reserved	White
3	GND	Blue
4	PNP/Active High Trigger	Black
5	0-10 VDC Analog Control	Gray

24 Volt

Pin (M12)	Function	Wire Color
1	+24 VDC	Brown
2	N/A	White
3	GND	Blue
4	N/A	Black
5	N/A	Gray

Optional M12 Pinout



Warranty Information

Every Advanced illumination, Inc. (Ai) product is thoroughly inspected and tested before leaving the factory. Products are warranted to be free of defects in workmanship and materials for a period of two years from the original date of purchase. Should a defect develop during this period, please contact Ai Customer Service or your Ai distributor for a Return Merchandise Authorization (RMA), and return the complete product, freight prepaid, to Ai. If a defect is found, Ai will - at our discretion - repair or replace the product without charge. Ai claims no liability for any implied warranties, including "merchantability" and "fitness for a specific purpose."

Electromagnetic Compatibility

This product was tested and complies with the regulatory requirements and limits for electromagnetic compatibility (EMC) as stated in the product specifications. These requirements and limits are designed to provide reasonable protection against harmful interference only when the product is operated in its intended industrial electromagnetic environment. To minimize the potential for electromagnetic interference or unacceptable performance degradation, install and use this product in strict accordance with the instructions in the product documentation.

Customer Service

For information on existing orders, or to make an order adjustment, contact us Monday through Friday 8:00 am to 5:00 pm, EST or send an email to orders@advill.com.

Company Information

Advanced Illumination

440 State Garage Road, Rochester VT. 05767

Phone: 802.767.3830

Fax: 802.767.3831

Email: info@advancedillumination.com

Web: advancedillumination.com

© 2015 Advanced Illumination Inc. All rights reserved