

AL116 LENGTH MATRIX

PART #	LENGTH IN INCHES (mm)
AL11602	2.52 (64.0 mm)
AL11604	4.52 (114.8 mm)
AL11606	6.52 (165.6 mm)
AL11608	8.52 (216.4 mm)
AL11610	10.52 (267.2 mm)
AL11612	12.52 (318.0 mm)
AL11614	14.52 (368.8 mm)
AL11616	16.52 (419.6 mm)
AL11618	18.52 (470.4 mm)
AL11620	20.52 (521.2 mm)

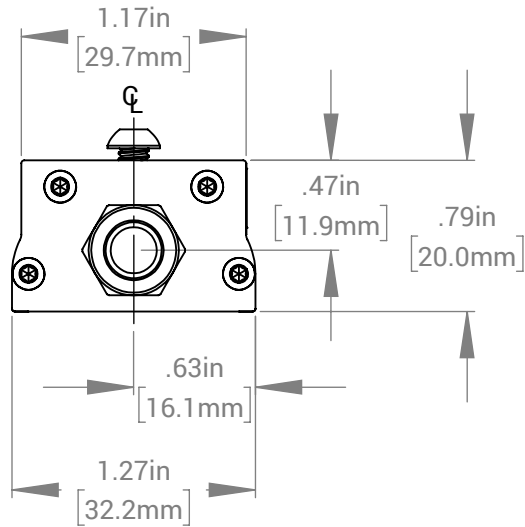
REVISIONS			
REV.	DESCRIPTION	DATE	DCN NO
-	FOR QUOTING PURPOSES ONLY		

CABLE ENTRY SIDE

.57in
[14.4mm]

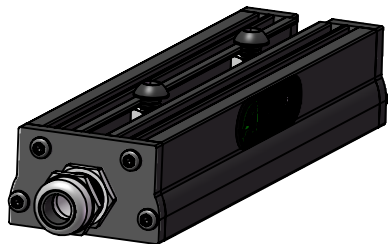
M4 NUT CHANNEL

.06in
[1.6mm]
(TYP.)



M4 MOUNTING SCREWS

REFER TO CHART ABOVE



FOR REFERENCE ONLY

PROPRIETARY AND CONFIDENTIAL
 THESE DRAWINGS AND SPECIFICATIONS ARE THE EXCLUSIVE PROPERTIES OF ADVANCED ILLUMINATION INCORPORATED ISSUED IN STRICT CONFIDENCE AND SHALL NOT, WITHOUT THE PRIOR WRITTEN PERMISSION OF ADVANCED ILLUMINATION INC BE REPRODUCED, COPIED OR USED FOR ANY PURPOSE WHATSOEVER EXCEPT THE MANUFACTURE OF ARTICLES FOR ADVANCED ILLUMINATION INC

4" UNIT WEIGHT: 1.88 lbs

CUT USING: -		UNLESS OTHERWISE SPECIFIED:	DATE	NAME	 440 STATE GARAGE ROAD, ROCHESTER, VERMONT 05767
		SURFACE SHOULD BE FREE OF SCRATCHES, BURRS, AND DENTS	28-SEP-18	T.MILLS	
		DIMENSIONS ARE IN: INCHES	CHECKED	--	TITLE: DRAWING, INSTALLATION, AL116 (NONSEALED)
		<u>TOLERANCES</u>	APPROVED	--	
		FRACTIONAL: 1/16	MATERIAL		SIZE DWG. NO. REV A AL116 (NONSEALED) -
		ANGULAR: MACH: ± 1 BEND: ± 1	FINISH		
		TWO PLACE DECIMAL: ± .010	-		SCALE: NTS/C CODE: - SHEET 1 OF 1
		THREE PLACE DECIMAL: ± .005	-		
NEXT ASSY	USED ON	MAKE FROM			
APPLICATION					