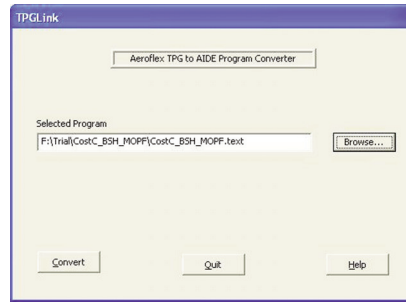


ATE

5800 Series TPGLink Migration Package

AEROFLEX
A passion for performance.



TPGLink

Aeroflex 5200 Series to Aeroflex 5800 Series Migration Package

- Preserve cable and fixture investment
- Minimize transition costs
- Retain debug parameters
- Upgrade to the 5800 Multi-Functional Test System
- Indirect conversion of Marconi 52X applications

Introduction

TPGLink is a standalone utility that allows the Aeroflex 5200 Series Manufacturing Defect Analyzer (MDA) applications to be easily migrated to the more advanced 5800 Multi-Functional Test System. TPGLink is very intuitive and simply extracts the in-circuit test blocks from the exported 5200 TPG program file and converts them to corresponding test modules within a 5800 program.

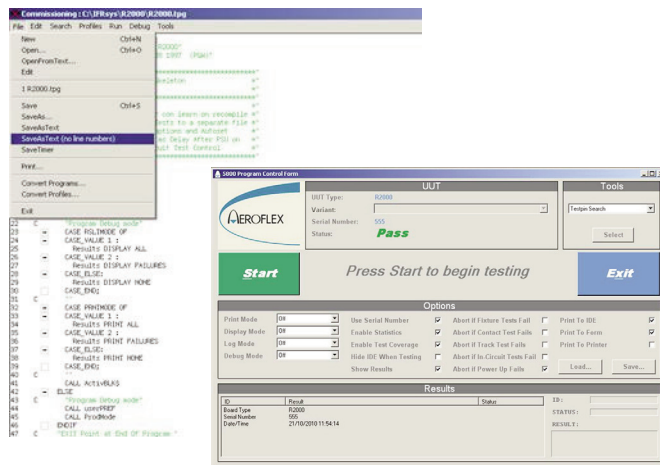
The migration of MDA test programs to the 5800 Series test system requires not just conversion of the test statements but also resolution of differences in the testpoint interface architecture. Given these two factors, the package comprises the migration software and two adapter cards to align with the 5200 Series standard configuration (2 off ICR192). If more testpoint cards are fitted to the 5200 MDA test system then additional adapter cards can be supplied.

TPGLink Migration Software

TPGLink is compatible with both Windows® XP and Windows® 7 (32/64 bit) and can reside on the PC controllers of the 5200 or 5800 or as a standalone installation on any suitable PC.

Migration Process

From within the 5200 TPG commissioning environment the user will save the program as a text file with no line numbers (<Filename.text>). The TPGLink utility will then allow you to browse to this file and by pressing the 'Convert' key, the file will be imported and a 5800 Aeroflex Integrated Development Environment (AIDE) program produced (<Filename.Program>). The process uses an AIDE template structure that provides a similar look and feel to that of TPG, allowing familiarity for the 5200 Series user.



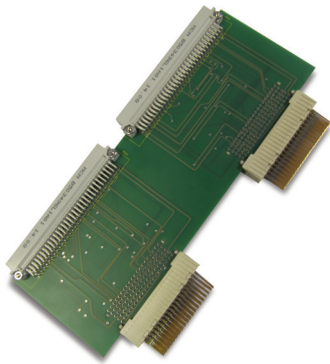
For the very latest specifications visit www.aeroflex.com

Having produced the AIDE program the user will then need to create a new project and add the migrated program to that project.

Adapter Card - SKH10988

The use of the adapter card preserves fixture and cabling investment, together with minimizing the transition costs, making the platform change as cost effective as possible.

Both systems are fitted with testpoint boards having 192 nodes and therefore fixture and test application node allocation can remain the same by utilizing the CardMap and PinMap functions inherent within the 5800 test language. This feature then allows testpoint identification within the application and associated documentation to be retained giving familiarity between platforms and easing the debug phase.



Evaluation of this process has proven that approximately 85% of any given TPG application will directly migrate. The remaining 15% will require an element of debug due to the differences in test techniques.

Additional Benefit

With the use of the 'CTL to AIC' conversion tool developed some years ago to allow Marconi 520 applications to run on the 5200 platform, we now have the capability to indirectly convert CTL applications to AIDE, opening a further product migration path.

This development also allows those users of fixtures from other ATE manufacturers that employ a DIN 41612 styled interface connector to convert to a 5800 based solution by means of the CardMap and PinMap functions together with testpoint cables. However in this case the applications will need to be converted manually or recreated from CAD data.



CHINA

Tel: [+86] (10) 6467 2823
Fax: [+86] (10) 6467 2821

EUROPE

Tel: [+44] (0) 1438 742200
Fax: [+44] (0) 1438 727601

FRANCE

Tel: [+33] 1 60 79 96 00
Fax: [+33] 1 60 77 69 22

HONG KONG

Tel: [+852] 2832 7988
Fax: [+852] 2834 5364

SCANDINAVIA

Tel: [+45] 9614 0045
Fax: [+45] 9614 0047

SPAIN

Tel: [+34] (91) 640 11 34
Fax: [+34] (91) 640 06 40

UNITED KINGDOM

Tel: [+44] (0) 1438 742200
Toll Free: [+44] (0800) 282 388 (UK only)
Fax: [+44] (0) 1438 727601

USA

Tel: [+1] (316) 522 4981
Toll Free: [+1] (800) 835 2352 (US only)
Fax: [+1] (316) 522 1360

As we are always seeking to improve our products, the information in this document gives only a general indication of the product capacity, performance and suitability, none of which shall form part of any contract. We reserve the right to make design changes without notice. All trademarks are acknowledged. Parent company Aeroflex, Inc. ©Aeroflex 2003.

www.aeroflex.com
info-test@ aeroflex.com



Our passion for performance is defined by three attributes represented by these three icons: solution-minded, performance-driven and customer-focused.