

CSZ EZ-View

Test chamber control, monitoring and data logging software

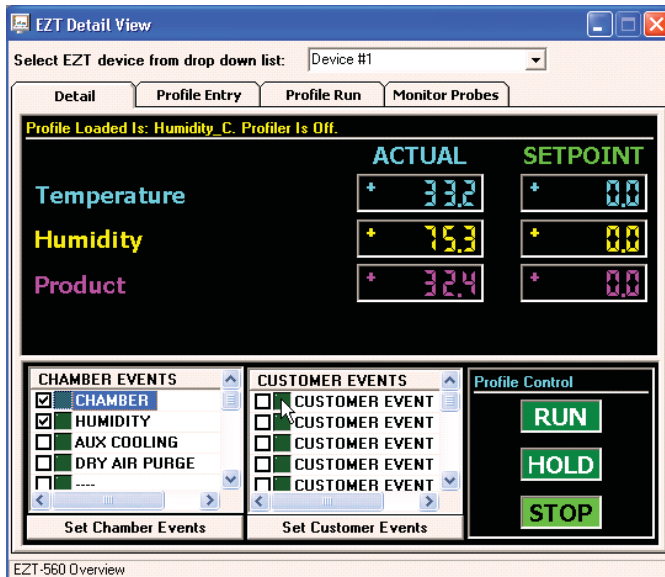
CSZ's EZ-View Software

CSZ EZ-View for simplified chamber control, monitoring & data management

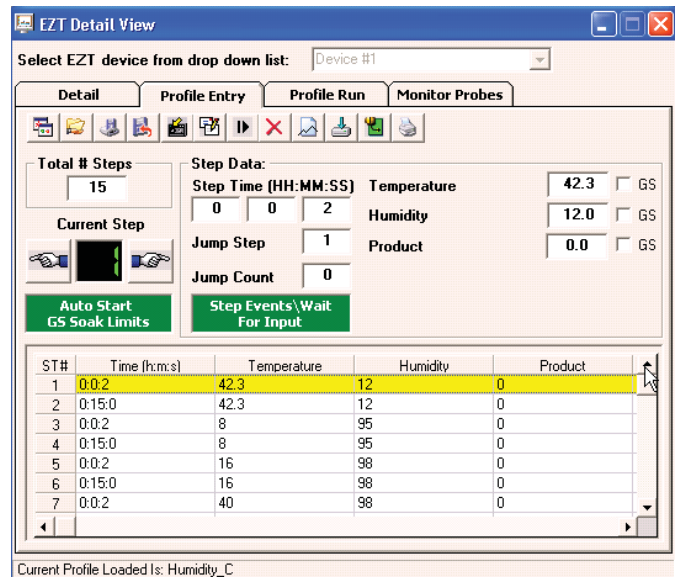
CSZ's EZ-View software provides chamber control, monitoring, and data logging for up to 128 devices on a single PC. Incorporates frequently used functions of the CSZ EZT controller all from one workstation making EZ-View the ideal choice to easily manage the test chambers in your lab. Remote Desktop provides the ability to remotely control & monitor all of the chambers on the link from one PC.

Simplified Programming

Profile entry with spreadsheet and graph monitoring of complete profile. Easily create profiles and download to all CSZ chambers on the link. Profiles may also be exported to USB drive.

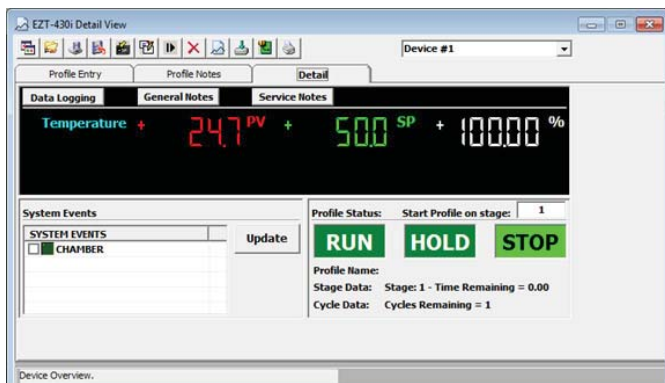


EZT-570i/560 Overview Screen

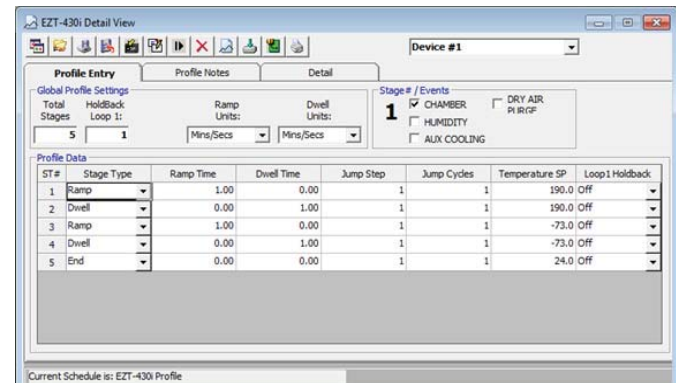


EZT-570i/560 Profile Screen

Stop, start and hold profiles. Profile status view provides an at-a-glance view of current profile condition along with estimated stop date/time, current step and time remaining in the profile.



EZT-430i Overview Screen



EZT-430i Profile Screen

Easily setup data logging and manage data log files for multiple chambers in a few clicks of a mouse. Save batch and lot numbers along with operator comments in the data file.

Dev#	Log Status	Log Name
1	Temperature Chamber	Temperature Chamber_5-20-2011_15-54-14.csv
2	Humidity Chamber	Humidity Chamber_5-20-2011_15-55-56.csv
3	Temp Cycling Chamber	Temp Cycling Chamber_5-20-2011_15-56-22.csv
4	Benchtop Chamber	
5	TempHumidity Chamber	
6	Walk-In Chamber B	
7	Walk-In Chamber C	

Advanced data logging functionality

- Dedicated data logging files for each device with quick download of data to .CSV file.
- Built-in data file search function. Search for any operator event or data string across all data files and user assigned directories on local or network drives.
- Advanced historical data log viewer & graph trending. Graphic user interface provided for all tools including zoom and data selection (continuous and discontinuous data supported). EZ-View can be installed on any PC to access historical data while running in simulation mode.
- Full system security with encryption on all data files including support for electronic signatures provide tamper-proof operation for all data files.
- Data log overview screen provides data logging details for all chambers and devices on the link in a single easy to use window. Data logging status, filename and directory information are provided.
- EZ-View data files can be configured to start and stop based on EZT-560/570i profile operation (automated data logging).

The screenshot shows the CSZ Ez-View software interface. On the left, there are two 'Device Thumbnail' windows for Bank 1 and Bank 2, each displaying real-time data for multiple chambers (Temperature, Humidity, Temp Cycling, Benchtop, TempHumidity, Walk-In). The main window displays the 'Logging Setup for Walkin Chamber A' dialog. This dialog includes a table for configuring logging parameters for various data points, an operator message field, and options for starting/stopping logging and saving the setup.

Device Add	Write On/Off	Data Save Tagname
4	<input checked="" type="checkbox"/> On/Off	Temperature
4	<input checked="" type="checkbox"/> On/Off	Temperature SP
4	<input type="checkbox"/> On/Off	Temperature %Out
4	<input checked="" type="checkbox"/> On/Off	Humidity
4	<input checked="" type="checkbox"/> On/Off	Humidity SP
4	<input type="checkbox"/> On/Off	Humidity %Out
4	<input type="checkbox"/> On/Off	Product
4	<input type="checkbox"/> On/Off	Product SP
4	<input type="checkbox"/> On/Off	Product %Out

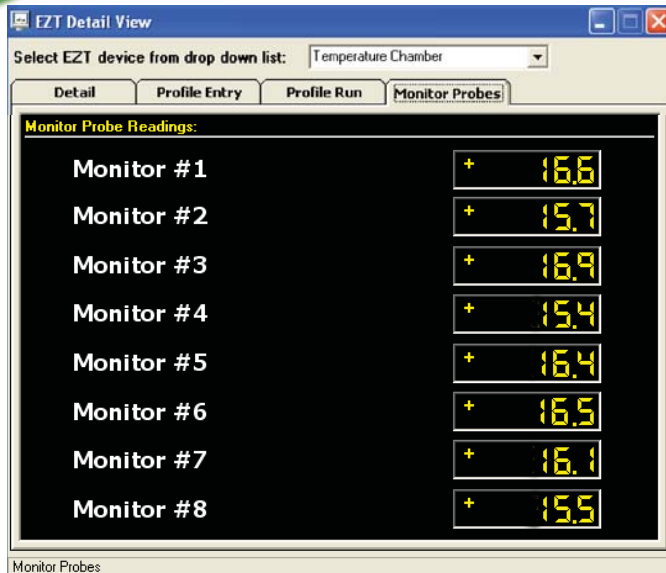
Operator Message To File: Save

Start/Stop Data Logging
 Data log interval in seconds: Batch # Lot #
 Data log on profile run: Data log on digital input: Alarm log interval:

Start Log Stop Log Save Setup Done/Close

Logging Active. File is: Walkin Chamber A_5-31-2011_12-33-13.csv

CSZ's EZ-View Software



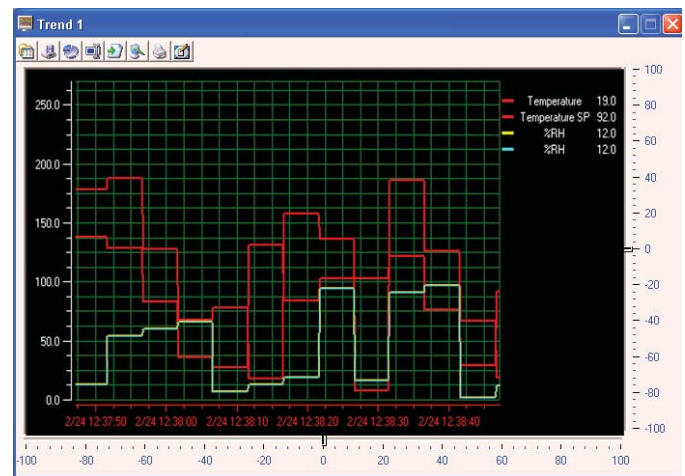
Temperature Monitoring (EZT-570i/EZT-560)

Provides temperature readout for optional monitoring package using 8 thermocouples. Additional input cards are available to expand temperature read out and data logging for 16 or 32 inputs.

Values are included in data log file and may be exported as a .CSV file for use in other software programs.

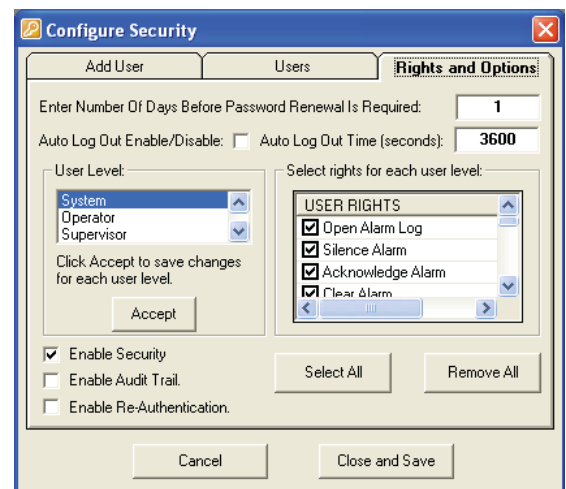
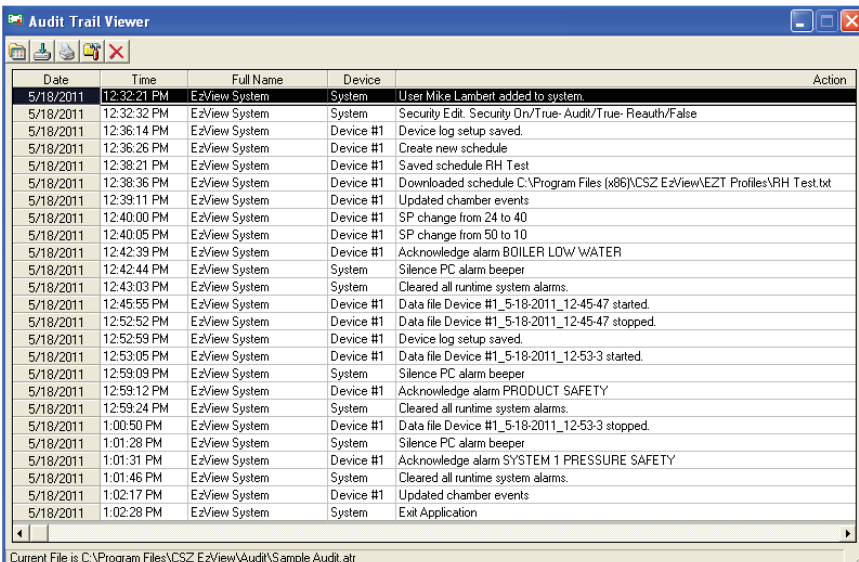
Trend Graphs

Flexible trending allows for 96 user configurable points across 8 different trend graphs. Trend graphs include zoom capabilities with complete setup of all points and colors. Real time trends provide unlimited "save sets" per trend.

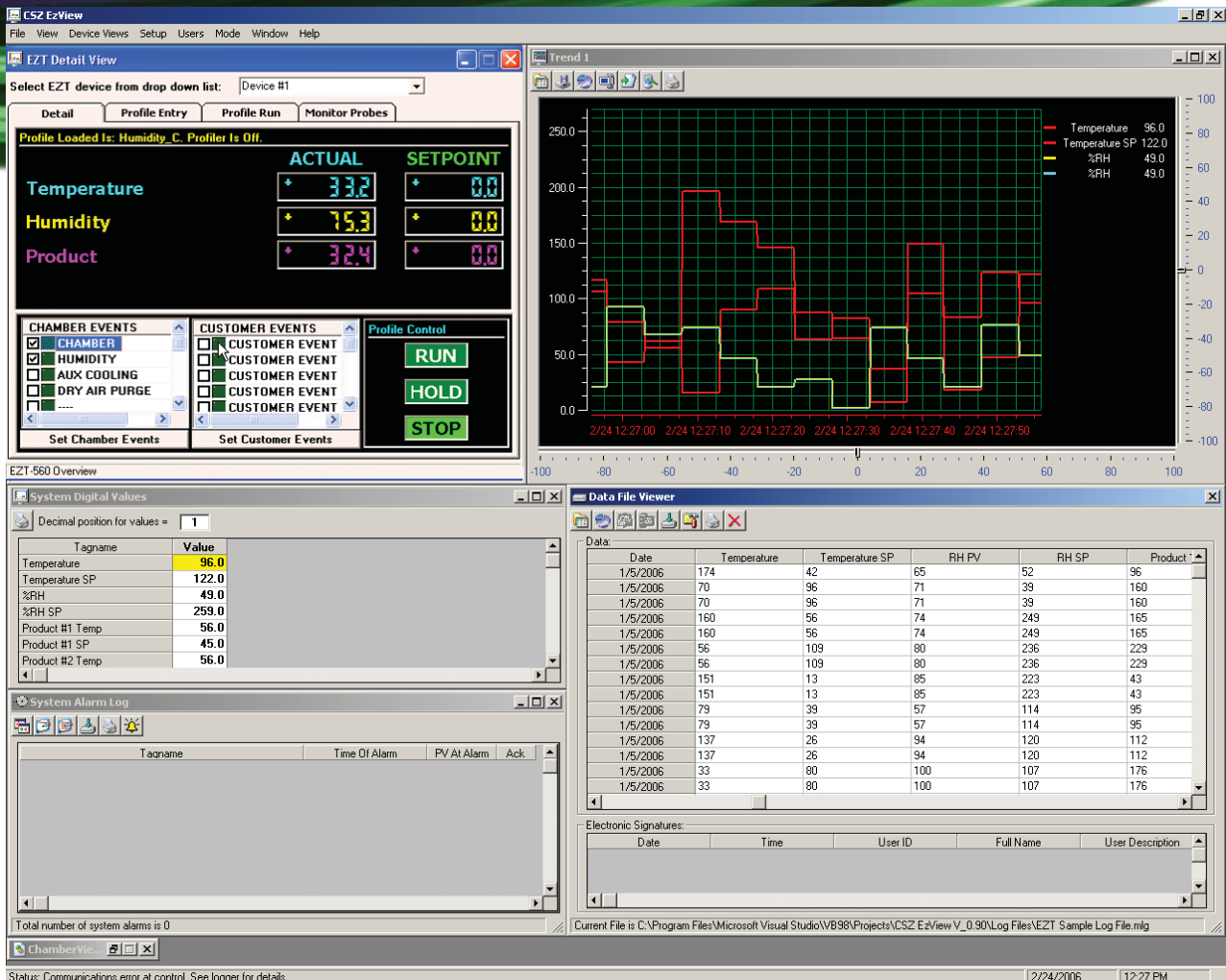


System & Data Security

Windows security with 4 security levels (system, operator, supervisor and administrator) and user security rights configurable for all EZ-View program operations. Audit trail files are created daily for tracking of all user actions for traceability.



Multiple windows may be displayed at the same time for increased efficiency.



Additional Features

- Configurable email and text message alarm notification.
- 200 configurable software alarms. User may add custom alarm conditions without the modification or change to any hardware on the communication link.
- Alarm monitoring and logging. Alarm active time, de-activated time, user acknowledgment and alarm type are logged and tracked for historical viewing.
- Configurable master alarm and auto dialer capabilities at a single PC station using a “plug and play” USB relay module.
- Allows connection of up to 31 chambers to a single PC using EIA-485.

Compatibility

- Windows 98, NT, XP, Vista, and Windows 7.
- CSZ EZT-570i, 560/560i, EZT-430i and P91 controllers.

The Experience you Rely on...

Cincinnati Sub-Zero (CSZ) Products, Inc. is an ISO-9001 certified company with over 70 years of industry experience designing and manufacturing temperature-controlled products of the highest quality, with a commitment to total customer satisfaction.

At CSZ, we offer a complete line of both standard and custom-designed environmental simulation chambers including:

- Temperature Cycling
- Humidity
- Stability Cabinets & Rooms
- Thermal Shock
- Stress-Screening
- Altitude
- AGREE Vibration
- HALT/HASS
- Freezers
- Liquid Chillers
- Wind & Rain
- Sand & Dust
- Other Temperature Management Solutions

Sizes range from benchtop to full walk-in/drive-in chambers.

TESTING SERVICES

CSZ Testing Services is an A2LA Accredited Test Laboratory utilizing the latest test technology. CSZ is your one stop source for all of your environmental simulation testing needs. Our testing laboratory is here to help with your product qualification testing, overflow testing and /or third party product validation. Testing capabilities include Temperature, Humidity, and/or Vibration, Thermal Shock, Burn-in, Altitude, Vibration, Shock, Salt Spray, and Cyclic Corrosion test. Serving you from two locations in Cincinnati, OH and Sterling Heights, MI. For more information please call CSZ Testing headquarters at 513-793-7774 or visit www.csztesting.com.



CSZ is your one stop solution for ...

Environmental Chambers
Freezers
System Upgrades
Preventative Maintenance
Calibration Services
Contract Testing Services

Cincinnati Sub-Zero Products, Inc.
12011 Mosteller Road
Cincinnati, OH 45241
(p) 513-772-8810
(f) 513-772-9119
www.cszindustrial.com