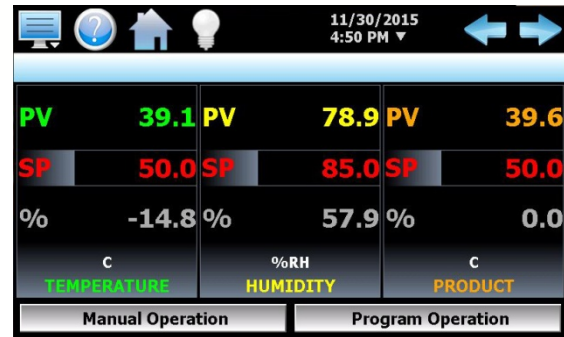
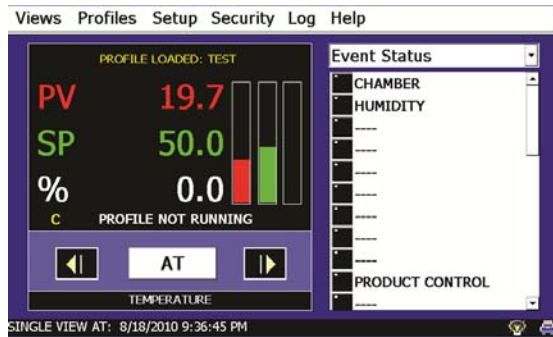


Differences between CSZ EZT-570i & New EZT-570S Controller



■ User Interface Improvements

- Users can choose to navigate the controller using familiar drop-down windows menus or icon-based navigation like consumer phone/tablet devices. The menus are in one column going down the pages instead of across like EZT-570i.
- Notifications menu provides a single-touch snapshot of current activity, actual/setpoint values, alarms, datalogging, profile, security, IP Address and more items.
- Simplified menus for main operating screens to navigate between loop, trend and profile views.
- Access icon bar at top of screen always available for navigation, help, home, alarm (if active) and notifications.
- Touch scrolling lists (data/on-off lists) provide fast/easy access to selections like consumer devices.
- Slide out keypads provide quick entry without losing focus of screen.

■ Home Screen Improvements

- Customizable for number of loops to display on the home screen.
- Manually control chamber and run or stop a profile without leaving the home screen.
- User selectable home screen of Overview or Main loop view.
- User configurable Main loop view screen can display from 1 to 5 loops.
- Chamber functions (events) accessible directly from the home screen.
- Profile selection and run/stop/hold and edit functions accessible directly from the home screen.

■ Profile Entry Improvements

- Program ramp step in °C/min – automatically calculates time for step entry.
- No need to enter total number of steps, simply insert as needed.
- Automatically copies events/setpoint values from previous step simplifying soak step entry (just specify time).
- Profile programming functions on same screen, including profile export.
- Plot Profile and view steps in list for reviewing profile entry.
- Profile time entry keypad provides faster time entry by automatically formatting numeric entry into HHH:MM:SS without having to navigate to individual fields and enter separate hours, minutes and seconds.
- Unused events hidden from event selection list (no more “----” seen for unused list items).

Differences between CSZ EZT-570i & New EZT-570S Controller

■ **Accessibility Improvements**

- Multilingual support including 28 different languages.
- Real-time trend graphs now show up to 24 hours of test data. EZT-570i limited to 8 hours. Historical graphs plot entire profile.
- Eight configurable trends with up to 8 plot points per trend. Trends can be configured with points assigned to both left and right vertical axis. EZT-570i can only show one loop at a time on the graph.
- Port assignment for FTP and email provides added IT security.
- Anonymous email entry allows users to skip login and password entries to meet configurable IT requirements.
- Dedicated tuning screen with graph interface and access to PID settings of loop controls along with auto tune. EZT-570i required changes of settings on the PID controllers.
- Unused status monitor items hidden from list views improving visibility (dashes “----“ no longer displayed).
- Import/Export Configuration functions allows simple backup/restore of all EZT configuration settings (excluding loop controls)
- Bar code option allows user to scan barcode to select a profile (with matching name) and add notes to current data file when datalogging.
- Compatible with existing CSZ optional EZ-View PC Software.

■ **Hardware Improvements**

- Faster processor / improved VNC server.
- User communications automatic for RS-232/485 port settings. Users no longer need to go offline to change between RS-232/485.
- Screen life for 7”/10” inch models longer at 50,000hrs (EZT-570S 4.3” model and EZT-570i 30,000 hours).